

35-WKH195 FLAIL MOWERS



Kellfri

Carefully read the operating instructions
before using the product!
Operating instructions translated from Swedish

TABLE OF CONTENTS

Introduction	3
Product information	3
Safety instructions	4
Instructions for emergency situations	4
Personal protection	4
Surroundings	5
Before use	5
Environment	5
Use	6
After use	6
Maintenance and service	7
Transportation and set-up	7
Recycling	7
When using machine/equipment connected to tractor	8
Machines/equipment connected to hydraulics	9
PTO shaft	9
Risks and hazards associated with the use of grassland machinery	10 - 11
Warning decals	12
Cutting	13
Connecting	14
Service and troubleshooting	14
Gearbox WKH195	15
Checking belt tension	15
Adjustment of belt	16
Grease points	17
Exploded diagrams and materials list	18 - 21
Flails	22 - 23
Movement pattern	24
Chemicals	25
Notes	26
Deviation form	27
Warranty terms and conditions	28

Kellfri designs and supplies efficient, affordable machinery and components for forestry, agriculture, construction and gardening in Sweden, the rest of the Nordic region and Europe.

We recommend that you always read and follow the safety instructions and the instructions in the machine's operating manual.

Kellfri is not liable for any errors in this document.

INTRODUCTION

Thank you for choosing a product from Kellfri AB. Compliance with the general safety instructions, operating instructions and common sense will guarantee many years of enjoyment using the product. Kellfri's equipment and products are aimed at self-employed farmers who have stringent performance demands.

PRODUCT INFORMATION

The WKM195H flail mower has a working width of 1.95 m, making it practical for flailing, topping or cutting medium-sized or large grasslands and grassed areas.

The flail mower has a fine-toothed welded counter bar in the chassis to break up the grass more effectively.

The cutting height is adjusted by the support roller and skids. The adjustable support roller guarantees a correct cutting height on uneven ground. The cutting height can be adjusted between 0-55 mm, enabling you to cut the grass close to the ground and thus achieve a more level result. The grass is evened out and the remnants moulder away faster. The support roller has a scraping iron to keep the roller free from cut material.

The front of the flail mower is fitted with chain guards that adapt to the substrate and protect both the tractor and the surroundings from stone chipping and grass spray.

The flail mower is fitted as standard with hammer flails.

This flail mower is equipped as standard with hydraulic side shift adjustment, which enables you to shift the machine to the left or right. The side shift adjustment means that you can cut at the side of your tractor and thereby reach areas that would otherwise be difficult to reach. The hydraulic side shift adjustment enables you to drive with just one pair of wheels in the uncut area and cut closer to ditches, fences, etc. The maximum side shift adjustment of the machine is 294 cm to the right and 78 cm to the left from the mid-point of the tractor.

The mower has an openable flap. You open the flap when you know you are cutting or topping ground that generates a higher flow of material. This enables you to drive freely under the same conditions as with a closed flap and a normal flow of material. You save on fuel and reduce wear on the belts, and you can also operate at a higher speed, as the grass does not become twisted around the roller. The grass is also spread more evenly.

TECHNICAL DATA	35-WKH195
Length x width x height	2085 x 945 x 950 mm
Working width	1950 mm
Operating height	0 - 55 mm
Weight	398 kg
Number of flails (hammer)	28 (<i>Adapted for Y-flails, which can be purchased additionally - not included.</i>)
Power requirement	50 - 60 hp
Operating speed	6-12 km/h
Gearbox oil	0.7 L [Transmission oil 80W-90]
Side shift adjustment	Hydraulic
RPM/ha	540
PTO drive shaft	Standard
3-point linkage	Cat 1 & 2

SAFETY INSTRUCTIONS

Before using the equipment or product, and for the safety of yourself and others, you must read the safety instructions and instruction manual and understand their contents. Always keep the safety instructions and operating manual handy for users of the equipment or product. For the safety of both yourself and others, it may be a good idea to read through the safety instructions every now and then. If the safety instructions or the operating manual are damaged, or become unusable for any other reason, new copies may be ordered from: Kellfri AB, Storsvängen 2, SE-532 38 SKARA, Sweden. Tel.: +46 511 242 50

The safety instructions can also be downloaded from Kellfri's website: www.kellfri.co.uk
Do not use the equipment or product if you feel ill, tired or are under the influence of alcohol. Do not use the equipment or product if you are taking prescribed medication or drugs, or suffering from severe depression or mental illness. Always comply with general rules of the road and applicable rules stipulated by animal welfare legislation. People under the age of 15 are not allowed to use the equipment.



Warning!

The original design of the machine must not, under any circumstances, be modified without the approval of the manufacturer. Unauthorised modifications and/or accessories may cause life-threatening injuries or death to users and others.

Kellfri is not liable for any modifications, changes or rebuilds carried out by customers.

Where the machine is used professionally, employers are responsible for ensuring that users of the machine have theoretical and practical knowledge of the machine and that work is performed in a safe manner. Stay informed by complying with work environment legislation; contact your local work environment authority.

INSTRUCTIONS FOR EMERGENCY SITUATIONS

In case of emergency, call 112.

Always have a mobile phone or emergency phone available when working alone. A first-aid kit and fire extinguisher must be kept in an easily accessible location when carrying out any work, maintenance or service.

PERSONAL PROTECTION

Always use suitable protection equipment. Do not wear loose clothing or jewellery while working with the equipment. Long hair should be tied up when working with equipment that has moving parts. Use protective gloves to avoid the risk of burns if hot surfaces such as exhaust pipes are touched, and to avoid oil and petrol getting in contact with the skin. Ear defenders must be worn whilst the engine is running.



SURROUNDINGS

Check that the work area is free from bystanders and objects before hitching or using the equipment. Otherwise, there is a risk of serious injury. Be extra careful if there are children in the vicinity of the area where the equipment or product is used or stored. Check that there are no low-hanging electrical cables within the work area. Exercise caution when working on slopes and close to ditches.

Always work alone with equipment or products that are made for working alone. Never leave rubbish in the work area, and keep work surfaces clean. Always respect the equipment's risk zone.



BEFORE USE

Carefully read the safety instructions and the operating manual. Make sure that you understand the safety instructions, the operating manual and warning decals. Use common sense and suitable personal protective equipment when using the product. Always check the performance of the machine combination to be used. It is important that these are compatible and work satisfactorily together. This is to ensure that the equipment or product works as expected, and to guarantee the safety of yourself and others. Carry out a visual inspection of the equipment or product before use. Repair or replace damaged or worn parts to reduce the risk of injury. Grease moving parts and check that all nuts and bolts are tightened. Repair if necessary. Learn and remember the correct working method. Beginners must work slowly until they have learned how the machine or product works.

Users/customers are responsible for ensuring users can handle the situation. If a user feels that the machine is dangerous to use, they should not use it until they have received thorough training.



ENVIRONMENT



- Disposal of oil and other waste
- Improper disposal of oil or other waste may be hazardous to the environment.
- When oil is emptied from the machine, it must be poured into a leak-proof container suitable for oil. It is not permissible to store oil in a container used for food or drink, in order to avoid the oil being consumed by mistake and causing serious injury.
- It is prohibited to spill oil on the ground, or pour it into a drain or anywhere leading to a water source.
- Discarded oil, fuel, coolant, brake fluid, filters and batteries must not be thrown away or emptied in just any manner. Contact your local authority for further information.

USE

Only those who understand the safety instructions and the operating manual may use the equipment or product. Exercise caution and care when working with the equipment or product and only use it in the way described in the instruction manual.

There is a risk of crushing when working with equipment that has moving parts. Exercise caution when working with equipment with hydraulic hoses, as oil under pressure can penetrate the skin. Immediately seek medical attention if this should occur. Always work alone with equipment that is made for working alone.

Respect the equipment's risk zone.



For further information about your machine, read the machine's operating manual.

Warning symbols identify important safety aspects in this manual in order to help you and others avoid dangers and accidents. When using the machine: Be extremely careful!



This symbol indicates that a serious accident will occur if the directions in the operating manual are not followed. The accident will lead to serious injury, possibly death, or serious damage.



This symbol indicates that an accident will occur if the directions in the manual are not followed. The accident will lead to serious injury or damage.



This symbol indicates that an accident may occur if the directions are not followed. The accident will lead to injury or damage.



NOTE indicates the risk of a breakdown if the directions are not followed.

Where the machine is used professionally, employers are responsible for ensuring that users of the machine have theoretical and practical knowledge of the machine and that work is performed in a safe manner. Stay informed by complying with work environment legislation; contact your local work environment authority.

AFTER USE

- Ensure that the equipment/product is standing on level ground when it is disconnected. Use stabilisers, if included with the product/tool.
- Wash, rinse with water and dry if necessary.
- Re-lubricate if necessary.

MAINTENANCE AND SERVICE

- Make sure that the equipment is stable and cannot tip over when carrying out maintenance and service work.
- Replace damaged or worn parts to reduce the risk of injuries.
- Carry out maintenance, service and checks in line with recommendations.
- Only use spare parts with equal performance to reduce the risk of injuries and breakdowns.
- All electrical repairs and electrical connections must be carried out by a qualified person.

Check that all nuts and bolts are tightened after maintenance and service work.
Always test the machine before starting work.



IMPORTANT! Check the oil level (gearbox/engine oil) and lubricate grease points regularly!

IMPORTANT! Dirt collects easily on exposed grease and causes increased wear. After lubrication, wipe excess grease off from couplings.



DANGER!

WARNING: Pressurised oil and fuel leaks can penetrate skin and cause serious injuries. Do not use your hands to locate leaks. Use a piece of paper or cardboard to search for leaks.

Kellfri AB has a policy of continuous product development and therefore reserves the right to make modifications, e.g. to the design and appearance of the product, without prior notice.

TRANSPORTATION AND SET-UP

- Check that the work area is free from bystanders, children and objects before driving off.
- Always observe additional caution during transport and moving.
- Ensure that the equipment or product is well anchored and that available transport lashings are fitted.
- Always position the load as low as possible. All protruding loads should be well anchored.
- Respect the risk zones even during transport and moving.
- Do not permit anyone to walk under suspended loads when carrying out lifts.
- Trailers used for transport should have brakes that work.
- An SMV sign must be attached when travelling on public roads.
- Check tyre pressure - see information on sides of tyres. Do not exceed the maximum pressure!
- Always store the equipment or product in a dry place, preferably under a roof, when not in use.
- Ensure that the equipment or product is stable and cannot tip over.
- Never permit children to play at the storage site.
- Be aware of the tipping risk!

RECYCLING

For scrapping, the equipment/product must be dismantled and transported to a recycling station designated by your local authority. Any liquids should be collected and transported to a recycling station designated by your local authority. Contact your local authority for further information.





FOR USING MACHINE/EQUIPMENT CONNECTED TO TRACTOR

PAY ATTENTION TO THE FOLLOWING:

- Carefully read the machine's operating manual before using the machine! It is important that you understand the directions in the manual.
- Keep the work area clear of children and other people. Moving parts increase the risk of accidents.
- Never put your hands or feet under the machine without first switching off the equipment and the tractor's engine.
- Never leave the equipment with the tractor engine running. Turn off the engine and apply the parking brake when you leave the equipment – even for a short period.
- Always disengage the machine before performing service or maintenance work.
- Never leave the machine in a raised position. There can be a loss of pressure in the hydraulics and the machine can drop to the ground.
- Ensure that all guards are in place and cannot come loose.
- The entire length of the PTO shaft must be protected. Ensure that the safety chain is well anchored.
- Only the driver of the tractor may be present in the vicinity of the machine while it is in operation.
- Before operation, ensure that there are no stones protruding from the field.
- Never exceed the PTO shaft's speed. (Recommended speed for most operation is 540 rpm.)
- Always adjust the rotor speed to the type of work to be carried out.
- Never use the machine if it is unbalanced.
- Do not try to remove jammed objects while the engine is running. Ensure that the engine and the rotors have stopped before carrying out any measures on the machine.
- Ejection warning! Respect the machine's risk zone of 15 - 25 m.
- Never hand over the machine to someone else until you are sure that they have the necessary knowledge of the machine.
- It is prohibited to stand between the tractor/loader and the machine during attachment and detachment.
- Operate a new machine at low speed and without a full load for the first few hours.
- Exercise caution when working near power lines and telephone lines.
- Do not operate the machine if substantial vibrations develop. Stop the machine immediately and inspect it.
- Before you connect or disconnect the hydraulic hoses, ensure that there is no longer any pressure in the system. Pull the hydraulic handle from side to side several times in order to remove pressure from the hydraulic hoses.
- Carry out a visual inspection of the equipment before use. Lubricate moving parts and check that nuts and bolts are tightened. Repair or replace damaged or worn parts.
- When you disconnect quick couplings, ensure that you protect them after use, so that they are not exposed to dirt.
- The tractor/loader should be fitted with an ABE2 or ABE3 fire extinguisher. Contact your insurance provider.



MACHINERY/EQUIPMENT CONNECTED TO HYDRAULICS

Be careful when you connect your machine or equipment to a hydraulic hose.



DANGER!

Pressurised oil and fuel leaks can penetrate skin and cause serious injuries. Do not use your hands to locate leaks. Use a piece of paper or cardboard to search for leaks.

- Warning of high pressure, risk of penetration injury.
- Before repairs or maintenance are carried out, the system must be relieved of any remaining pressure.
- Turn off the tractor and move the hydraulic levers back and forth to release any pressure that may still be in the oil hoses and pipes before starting any work on them or the hydraulic cylinders.
- Clean the filter in the suction pipe after 10 hours' work.
- Immediately replace hydraulic hoses if cracks or wear are detected.
- Do not adjust the valve settings. Incorrect adjustment can result in damage to the machine and/or injury.
- The hydraulic system must only be operated using hydraulic oil intended for the purpose. **Check the oil level before starting the machine!**
- When commissioning a new machine, it is recommended that the hydraulic oil is changed after the first 10 hours of operation, in order to remove any dirt or metal chips which may have got into the hydraulic system.

NOTE The oil becomes hot when it flows through the hydraulic system. Check the oil temperature at regular intervals in order to avoid overheating. Stop the machine if the oil becomes overheated and allow the oil to cool down.



POWER TAKE-OFF SHAFT (PTO SHAFT)



Warning! Rotating power take-off
Warning! Risk of crushing!

Things to remember when operating equipment with a PTO shaft

The transmission to the gearbox is protected both by the PTO drive shaft and by the shear bolt. All guards should be correctly assembled and in good condition. If the guards are in poor condition or worn out, they should be replaced before the equipment is used.



If the PTO shaft is not correctly protected, it can result in death, as it can trap parts of the body or clothing and cause life-threatening injury.

Ensure that the safety chain is correctly anchored to the PTO drive shaft and that the PTO shaft is protected along its entire length. Ensure that the PTO shaft spins easily inside the protective tubular pipe. Keep the spline grooves clean and well lubricated so that the PTO drive shaft can be connected easily.

For adjustment and use of the PTO shaft, see the PTO shaft operating manual.



Never overload the PTO shaft! Never exceed the PTO shaft's maximum speed.

RISKS AND HAZARDS ASSOCIATED WITH THE USE OF GRASSLAND MACHINERY

Risk of crushing

Observers can be injured when the machine is lowered in the cutting position. Pasture toppers have crushing points around the hinge areas and between the 3-point linkage and the main body. Respect the risk zone of 15 m!

Rotating blades

WARNING! Any person can risk injury by putting their hands or feet under the machine when it is lifted from the ground and the blades are still rotating. Nobody is allowed in the vicinity during operation or when the machine is running.

Risk of crushing

This risk is common in mechanical transmission devices such as belt drives, bevel gears and rollers. Ensure that all guards are correctly fitted.



Rotating blades

Risk when disengaging machine

The heavier a rotating part is, the longer it will continue to rotate after the wheel drive has been disconnected. This property is called free-wheeling. Rotating blades and other components such as drive shafts etc. will continue to spin round after the wheel drive has been disconnected. Injuries occur:

- When the operator disconnects the equipment and attempts to clean or adjust the machine before the components have stopped rotating.
- When the shear bolt in the protective device in the power outlet disintegrates and the rotors continue to spin while the power outlet has stopped. The operator's awareness is of key importance for safety around rotating parts. Never raise the machine while the blades are still rotating!

Risk of ejected objects

Machines that cut grass eject material during operation. Foreign objects such as stones, sticks and other debris can find their way under the machine and be ejected at great speed. Metal guards at the sides and front prevent these objects being ejected, but this is no guarantee that they will always capture everything.



Observers or animals standing in the way of an ejected object can suffer serious injury. Never operate the machine when there are observers nearby. **Respect the equipment's risk zone of 15-25 m!**

Noise

Note that the machine is intended for outdoor use and that the operator's position is the driver's seat of the tractor. It is advisable to read the directions given in the tractor manual and maintenance instructions. The sound pressure level during operation exceeds 70 dB. Hearing protection must therefore be worn during operation.

Accidents involving slipping and falling are often a result of:

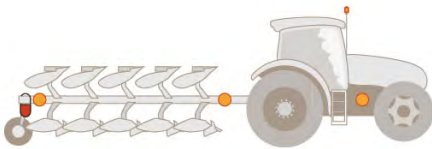
- Slippery surface
- Uneven steps and work platforms.

The risk of slips and falls can be reduced considerably by exercising good judgement.

All unprotected rotating machine parts increase the risk of accidents. Accidents usually occur when loose-fitting clothing or long hair is caught and wrapped around rotating parts, such as PTO shafts or drive shafts on the machine. Ensure that all guards are correctly fitted.

DRIVE SAFELY ON PUBLIC ROADS

- Always follow traffic safety rules on public roads, and following the regulations applying to driving a tractor with towed equipment on a public road.
- Check that reflectors, warning signals and/or warning flags indicating protruding equipment are fitted to the machine or tractor. These indicators must be correctly mounted, and must be visible and easy for drivers of other vehicles to see.
- Observers must not lean against or climb onto the machine during transport or during work. NEVER allow anyone to travel on the machine!
- The maximum transportation speed must not exceed 20 km/h.
- Brake regulations: If the gross weight of the trailer exceeds the gross weight of the towing vehicle, the trailer must be equipped with a brake. For further information, contact the traffic authorities.
- IMPORTANT! Mark protruding equipment clearly with additional lights or suitable reflectors. It is IMPORTANT that the equipment is visible! If you are driving on a public road, any load or equipment protruding in front of or behind the tractor must be marked. In darkness, at dusk or dawn or in weather with poor visibility, the load must be marked with a white reflector and lantern at the front and a red reflector and lantern at the rear. In daylight you can mark the load with a flag or a piece of fabric in colours which are easy to notice, such as red and yellow.



















- Think about front-loaded equipment. As well as marking front-loaded equipment clearly, you can also try to make front-loaded equipment such as a bucket, bale spike or pallet forks less aggressive if another driver should collide with it.
- Before going out onto public roads, it is also always advisable to look over your vehicle and check that the brake system on the following vehicle is working, and that your tow bar eyes are not too worn. A worn-out towing eye can break if subjected to a heavy load, and you can lose the cart.
- It is also advisable to check that the SMV sign is clearly visible from behind. If it is obscured by any equipment or load behind, you must hang an additional one at the rear of the vehicle train.



WARNING DECALS

Make sure warning decals are always visible and clean them when necessary. Do not use a high-pressure washer directly on the warning decal. If a part with a decal is replaced, or the decal becomes worn or in any other way unusable, order a new set of decals.

SYMBOL	EXPLANATION
 	<p>Read the operating manual! Before carrying out work.</p>
  	<p>WARNING! Rotating machine parts. WARNING! Crushing risk! Never use the machine without all guards correctly mounted. Do not put your hand or any other part of your body into the machine while it is running. DANGER! Risk of entrapment in the rotating PTO shaft.</p>
 	<p>Ejection warning! Respect the equipment's risk zone! Risk zone 15 m around the machine.</p>
 	<p>- Lubrication - Tighten all bolts, nuts and couplings before use.</p>
 	<p>The machine is intended only for working alone. WARNING! No one is allowed in the vicinity of the machine during operation! Do not climb on the machine!</p>
 	<p>Warning! Keep off the machine! There must be no one standing behind the tractor/towing vehicle while the machine/equipment is being attached or detached.</p>
	<p>Warning! Accident risk for children! Children are not allowed in the vicinity of the machine.</p>
	<p>Always store the product in a dry place, preferably under a roof, when not in use.</p>
	<p>The product is CE marked</p>

CUTTING

- Check the area to be cut, and remove objects and debris that might be caught and ejected by the blades.
- The amount of grass to be cut determines the forward speed; low speed usually produces the best results. It is best to cut grass when it is dry. Cutting wet grass can cause clogging and the formation of grass clumps behind the cutting unit. When cutting very tall grass, raise the cutting height and cut the same area twice, with a lower cutting height the second time. Allow at least 24 hours between the first and second cutting, to enable the grass to dry out.
- Lower the cutting unit towards the ground. Connect the PTO shaft so that the blades begin to rotate.
- Warning! The machine is not made to work the ground. Do not drive in dirt and rocks.
- Before each run, check the number of flails. Missing flails replace immediately with a new one. Driving with missing flails creates unevenness and can cause damage to the flail-mower. Any broken and damaged flails are replaced. Regularly check that all the bolts are properly tightened.

CONNECTING

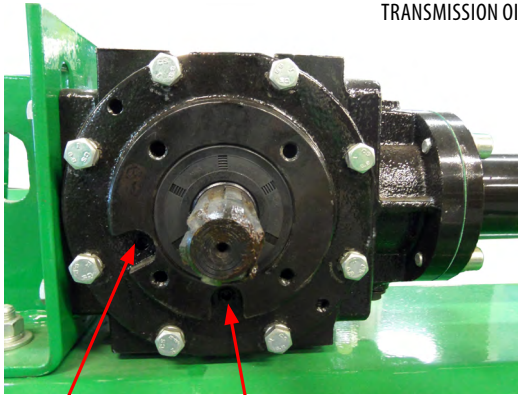
- Connect the machine to the tractor's rear 3-point linkage.
- Connect the PTO shaft. Secure the chain properly.
- Connect hydraulic hoses. Raise the equipment and check its functioning.
- Ready for use.

TIGHTEN BOLTS AFTER A FEW HOURS OF OPERATION!!!

SERVICE	INTERVAL	MEASURE
Flails	Before each use	Replace all defective flails. Sharp blades give better results. When replacing blades, tighten bolts fully.
	While operating	Listen out for noises
	After each use	Check
Gearbox	Before each use	Check level
Transmission oil 80W-90	50 hours of operation	First oil change
	100 operating hours or a minimum of once a year	Oil change Volume: 1.5 L Oil in the pipe: 0.2 L
Rotor	After 20 hours of operation	Lubrication
Belts	After one hour of operation Regularly	Belt tension: checking and tensioning. The belt should move 20 mm under pressure.
Hydraulics	Before each use	Check that all hoses are intact, connected and leak-proof
The equipment	After each use	Wash off earth and grass with water

FAULT	MEASURE
The flail mower cuts unevenly or badly	Check that all flails are intact and firmly in position. Adjust the support roller and check that is in the correct position. Check the drive belts and tighten if necessary.
The cutting sound changes	Check the roller. Check the tension of the drive belts. Check the flails.
Vibrations	Check the flails.
Hydraulics do not work	Check hoses and connections.

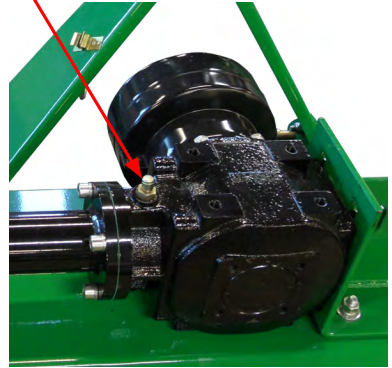
GEARBOX WKH195



LEVEL PLUG

DRAINAGE PLUG

REFILLING WITH OIL -
TRANSMISSION OIL 80W-90 (1.5 L)



**CHECK AND TIGHTEN THE BELTS AT REGULAR INTERVALS.
NEW MACHINE - CHECK AND TIGHTEN THE BELTS AFTER TWO HOURS OF OPERATION.**

CHECKING BELT TENSION



BELT GUARD DISASSEMBLE
BELT GUARD

ILLUSTRATION 1

CHECK BELT TENSION REGULARLY
The belt should move 20 mm under pressure
(10 mm on each side - see illustration 2)

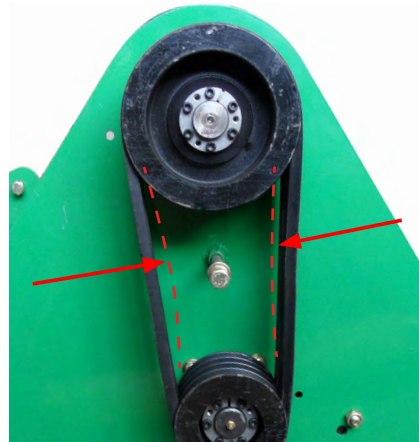
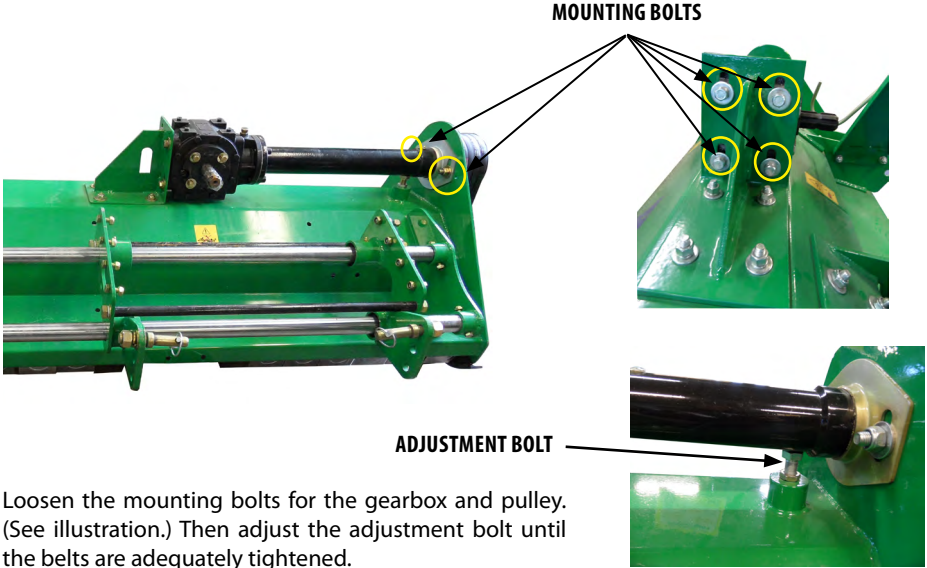


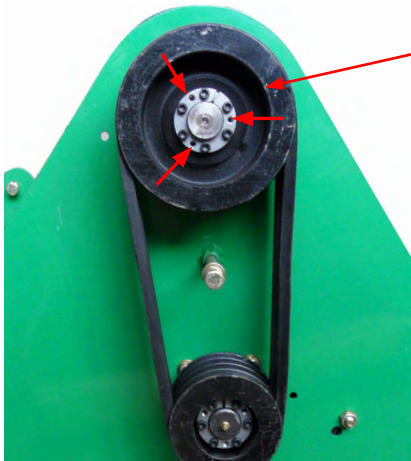
ILLUSTRATION 2

BELT ADJUSTMENT



Loosen the mounting bolts for the gearbox and pulley. (See illustration.) Then adjust the adjustment bolt until the belts are adequately tightened.

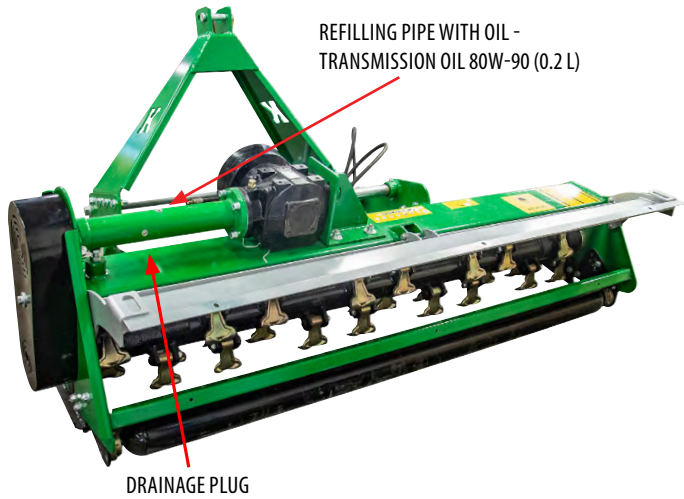
CHECK AND TIGHTEN COG BELT AFTER ONE HOUR OF OPERATION!!



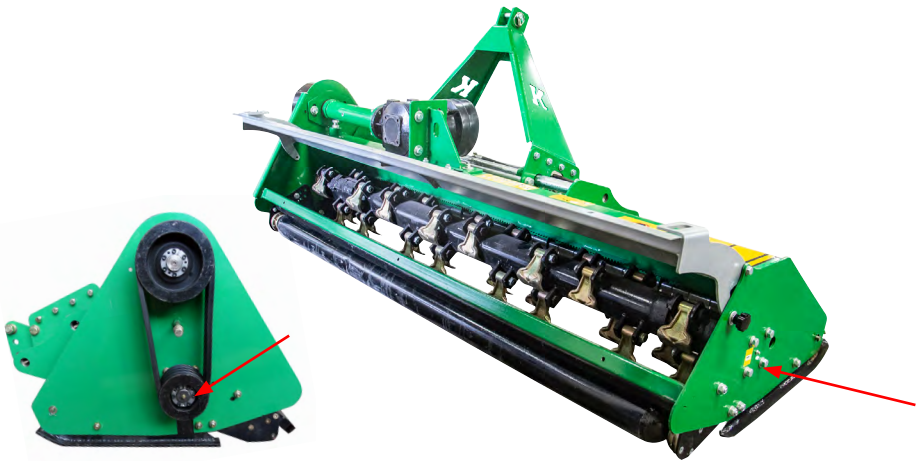
Re-tighten the pulley bolts at regular intervals.

To keep the clamp bushing in place while replacing belt or pulley:

- Loosen and remove 3 bolts from the pulley.
- Insert them in the threaded holes on the clamp bushing. (See marked holes in the illustration.)
- Then remove the remaining bolts.
- Replace belt/pulley and then reassemble all bolts.
- Tighten and check the belt tension, and adjust if necessary.
- Repeat the procedure on the lower pulley.



IMPORTANT! LUBRICATE ALL GREASE POINTS BEFORE OPERATION.



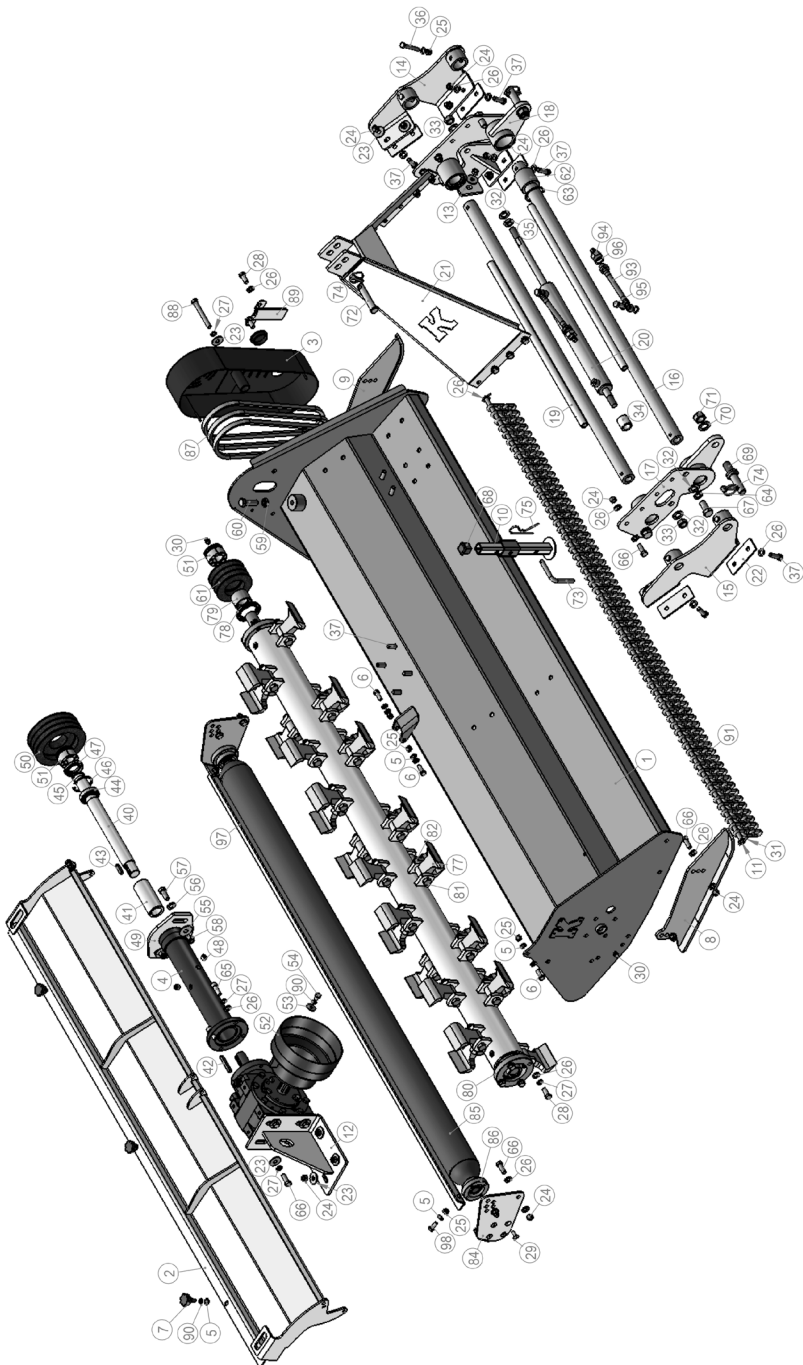
GREASE POINTS



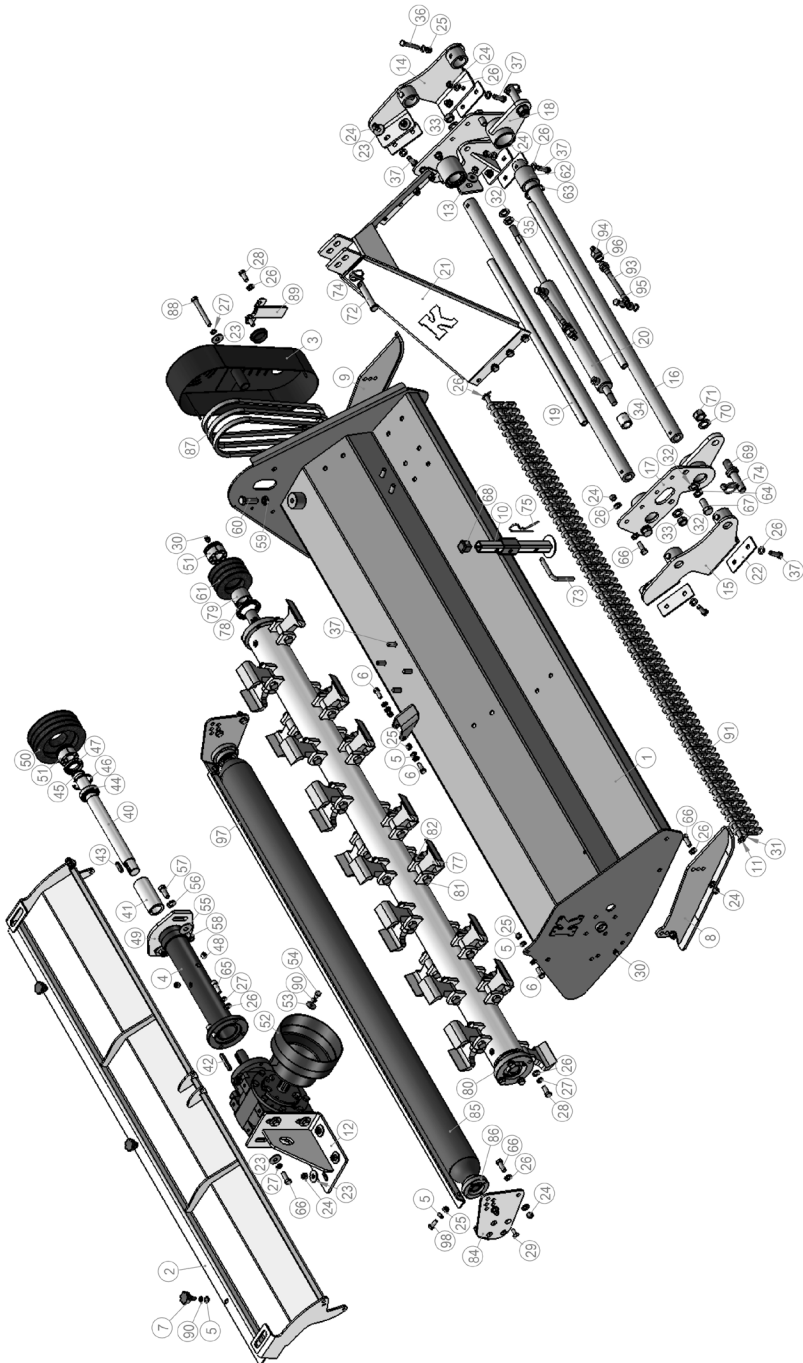
Lubricate the indicated grease nipples regularly, and every time you rinse off the machine, to remove the water that has penetrated into the bearings during the rinsing.

Inadequate lubrication can result in unnecessary wear and mechanical damage. Use a universal lubricant.

IMPORTANT! Avoid over-lubricating. Dirt collects easily on exposed grease and causes increased wear. After lubrication, wipe excess grease off from grease nipples and bearings.



ITEM NO.	DESIGNATION	QUANTITY	ITEM NO.	DESIGNATION	QUANTITY
1	Frame	1	35	Hex lock nut M18x1.5	1
2	Gear back	1	36	Hex key M10x70	4
3	Belt guard	1	37	Hex key M12x40	12
4	Shaft pipe	1	38	Gearbox	1
5	10 Flat washer	18	39	Plate	1
6	Hex key M10x35	4	40	Connection shaft	1
7	Bakelite bolt M10-22	3	41	Shaft sleeve	1
8	Slide rail, left	1	42	Spanner 10x70	1
9	Slide rail, right	1	43	Spanner 10x40	1
10	Stabiliser	1	44	Bearing 6007	1
11	Throttle shaft	1	45	Shaft ring 35	1
12	Mounting plate - gearbox	1	46	Circlip 62	1
13	Cylinder base	1	47	Oil seal 62x35x10	1
14	Connection bracket, right	1	48	Hex plug 3/8x12	2
15	Connection bracket, left	1	49	Connecting plate	1
16	Guiderail	2	50	Pulley, large	1
17	Adjustment plate, left	1	51	Pulley lock 35x60	2
18	Adjustment plate, right	1	52	Dust guard	1
19	Bracing tube	2	53	Washer 10	2
20	Slide cylinder	1	54	Hex key M10x16	2
21	Suspension	1	55	Washer 14x3	2
22	Rectangular washer	6	56	Flat washer 14	2
23	Washer, large 12	15	57	Hex key M14x35	2
24	Hex lock nut M12	34	58	Hex lock nut M14	2
25	Hex lock nut M10	10	59	Hex lock nut M16x1.5	1
26	Flat washer 12	66	60	Hex key M16x1.5x50	1
27	Spring washer 12	13	61	Pulley, small	1
28	Hex key M12x30	8	62	Nylon guard	4
29	Hex key M8x25	8	63	Circlip 60	4
30	Grease nipple M8-1	2	64	Spring washer 18	4
31	Cotter pin 4x25	2	65	Hex key M12x35	4
32	Flat washer 18	7	66	Hex key M12 x 35	20
33	Hex lock nut M18x1.5	2	67	Hex key M18x40	4
34	Spacer	1	68	Pipe plug	1

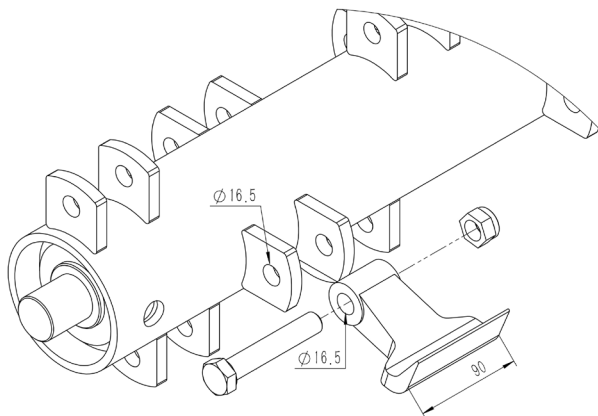


ITEM NO.	DESIGNATION	QUANTITY
69	Suspension pin	2
70	Flat washer 22	2
71	Hex lock nut M22	2
72	Upper pin	1
73	Spring pin	1
74	Locking pin 11	3
75	R-clip 4	1
76	Blade shaft	1
77	Hammer flails	28
78	Oil seal 55x80x8	1
79	Sleeve	1
80	Bearing housing UC207	2
81	Hex key M16x90	28
82	Hex lock nut M16	28
83	Connecting plate, left	1
84	Connecting plate, right	1
85	Roller	1
86	Bearing housing UC205	2
87	Belt BX40	3
88	Hex key M12x110	1
89	Protective panel	1
90	Spring washer 10	6
91	Chain	64
92	Washer 12	4
93	Oil pipe	2
94	Quick coupler G1/2	2
95	Bolt M12x1.25 (hollow)	2
96	Washer G1/2	2
97	Scraper	1
98	Hex key M10x25	2
99	Rubber cover	1

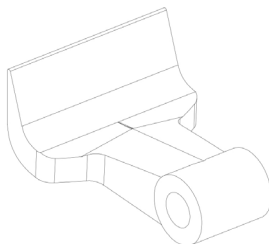
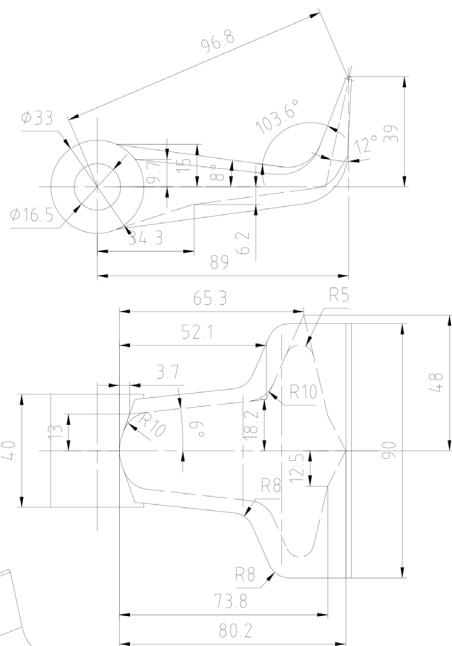
FLAILS

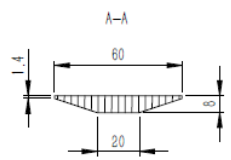
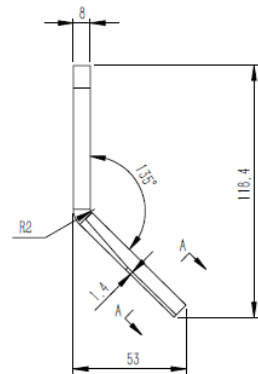
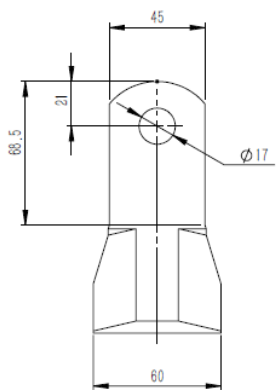
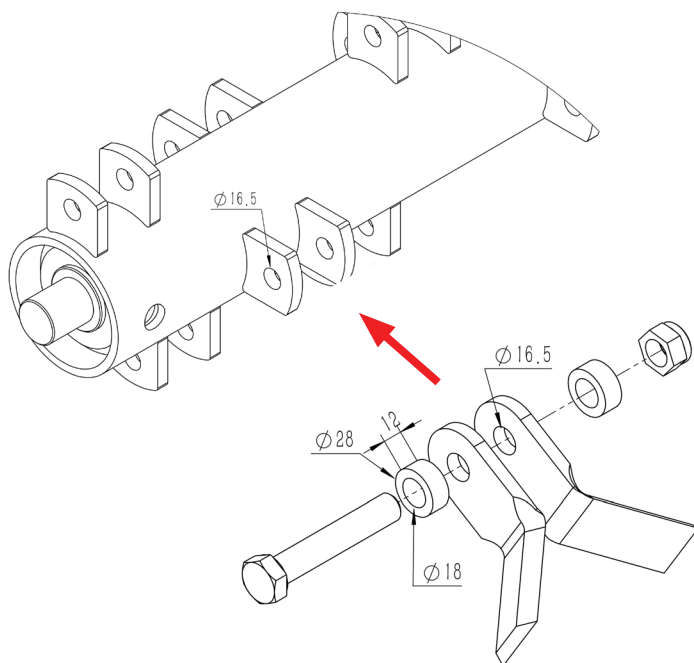
The product is supplied with hammer flails.

The possibility of replacing them with Y-flails is available as an option.



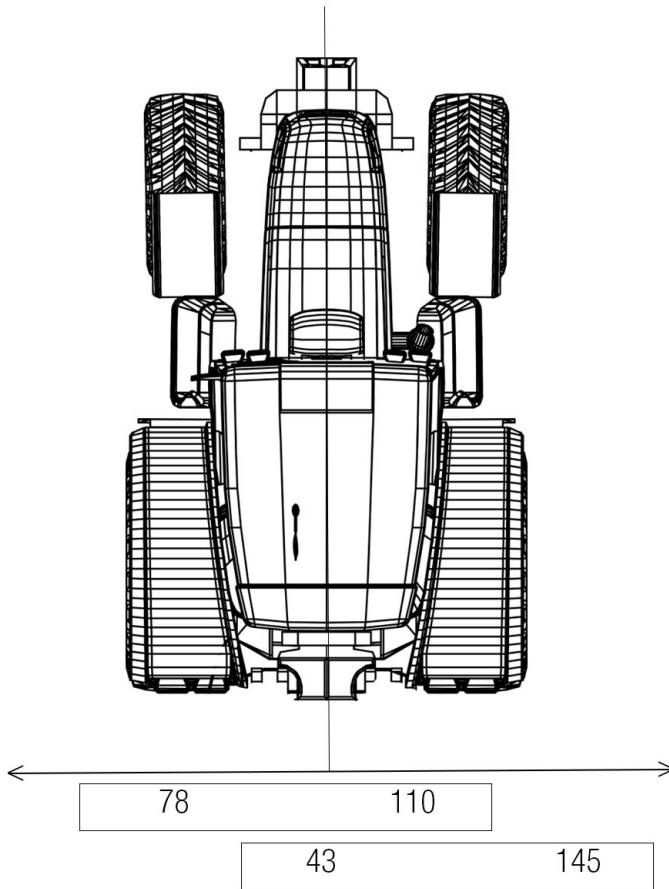
Hammer flail - article no.: **R35-VKM195H.001**





Y-flails - article no.: **R35-SK180.003**
 Spacer - article no.: **R35-VKM175.008**

MOVEMENT PATTERN



CHEMICALS

To maximise the service life of a product/equipment, maintenance - and not least preventive maintenance - is important, and this is largely what greases and oils do. Carefully read the operating manuals for your new products or equipment to ensure correct maintenance and service life and that the warranty remains valid!

Lubricating greases

First aid measures.

Inhalation - In the event of unintended inhalation of fumes, move the injured person into fresh air.

Skin contact - Wash with soap and water. Contact a doctor in the event of eczema or skin complaints.

Eye contact - Remove contact lenses, if any, before rinsing. Rinse thoroughly with large amounts of water, including under the eyelids. Contact a doctor if discomfort remains.

Ingestion - DO NOT induce vomiting. Drink water in small quantities. In the event of ingestion or discomfort, contact the poison information service or a doctor.

Hand protection - Wear protective gloves.

Eye protection - Avoid contact with eyes. Wear approved protective goggles.

Body protection - Suitable protective clothing.

Respiratory protection - No protection is necessary during normal handling.

Greases should be stored well-sealed in a cool place in a well-ventilated area. Storage temperature must not exceed 45°C. Keep away from heat, flames and sparks. The function and strength of materials such as steel, plastic, oils, grease etc. deteriorates considerably at very low temperatures (-20 to -30°C).



Keep chemicals out of the reach of children and animals.

Degreasing

To ensure the best lubricating effect, you need to clean parts of the product or equipment from time to time. We recommend degreasing to achieve thorough cleaning and to remove all residues of old lubricant, which may contain destructive particles.



Case number:

DEVIATION FORM

We are grateful for your help in pointing out any defects in the product supplied to you by Kellfri. Before making a claim, read Kellfri's general purchase terms and conditions in our catalogue or on our website www.kellfri.co.uk, and in the operating manual if supplied. The manual can also be downloaded from manual.kellfri.co.uk

Please fill in the details below and attach photos as documentation so that we can process your case optimally. In order for us to obtain as good an understanding as possible of any faults, please take at least four photos of the defective parts of the machine/equipment; two of the entire equipment from two different angles and two close-ups of the actual damage from two different angles. (Feel free to attach photos on the next page.)

If the product was purchased from a dealer, please contact the dealer in the first instance.

Purchaser**:	Customer number**:
Address**:	Invoice number:
Email**:	Daytime telephone**:

When was the product supplied?	When was the product put into operation?	Was the product working on delivery? YES NO
--------------------------------	--	--

Product name/article number**:

Serial number:

REASON	YES
(11) Transport damage*	
(09) Product complaint*	
(04) Wrong goods delivered	
(03) Wrong quantity	

REASON	YES
(05) Wrong price	
(02) Ordered by mistake/ Charge-back	
(99) Other reason*	

* Fill in form below

Required fields**

Description of fault**:

Describe the course of events:

Miscellaneous:

Customer's signature:	Date:
-----------------------	-------

To be filled in by dealer

Dealer:	Invoice number:
---------	-----------------

Signature:	Date:
------------	-------

Kellfri

WARRANTY TERMS AND CONDITIONS

- Validity of warranty** - Kellfri's warranty is valid for 12 months from the date of purchase.
- The warranty covers** - Reimbursement for parts replaced after a material fault or manufacturing fault has been verified.
- The warranty does not cover**
- Labour costs
 - Travel costs
 - Machines on which the purchaser has made or commissioned modifications.
 - Any additional costs arising as a result of damage to the machine.
 - Damage due to normal wear and tear of the machine, substandard servicing, the user's inexperience or use of spare parts that are not original.
 - Wear parts such as hoses, seals, oil and belts.

EC DECLARATION OF CONFORMITY FOR MACHINERY, ORIGINAL



In accordance with 2006/42/EC, Appendix 2A
Kellfri AB
Storsvängen 2
SE-532 38 Skara, Sweden

Hereby declares that the machine

Name: 35-WKH195

Type: Flail mower

Conforms with all applicable requirements in the Machinery Directive 2006/42/EC.
Other equipment must comply with the Machinery Directive's requirements.

Kjell Johansson
Product Development Manager

CUSTOMER SERVICE

*You are always welcome to give feedback or ask us about our equipment and products.
Kellfri AB has a policy of continuous product development and therefore reserves the right
to make modifications, e.g. to the design and appearance of the product, without prior notice.*

Kellfri

Kellfri AB
Tel.: +46 511 242 50
Email: info@kellfri.co.uk

Updated 18 September 2024