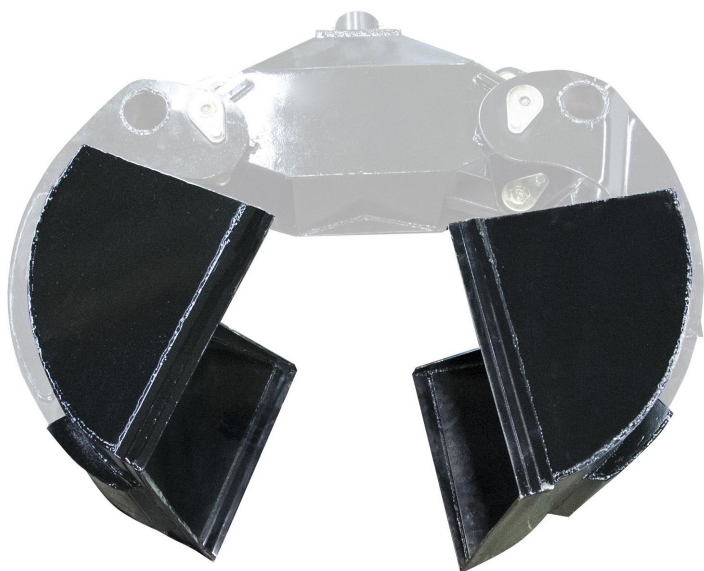


## INSERT BUCKET FOR GRAPPLE 21

21-KGS70



### From grapple to grapple bucket with Kellfri's bucket insert

A grapple bucket expands the range of applications for your crane, clearing ditches, earth, grain or gravel.

Bucket insert in robust steel plating with simple mounting and large volume. 70 cm wide, opens 117 cm.

#### TECHNICAL DATA

|                         |                        |
|-------------------------|------------------------|
| <b>Working width</b>    | <b>700 mm</b>          |
| <b>Operating length</b> | <b>390+390 mm</b>      |
| <b>Grapple</b>          | <b>1170 mm (width)</b> |
| <b>Volume</b>           | <b>167 l</b>           |
| <b>Vikt</b>             | <b>75 kg</b>           |