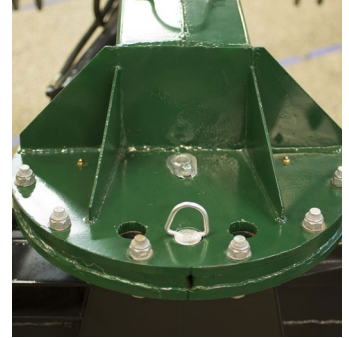


DOZER BLADE, 2.5 M INCLUDING WHEELS AND HYDRAULIC CYLINDER

37-25063SHC



[See videos 1.](#)

[See videos 2.](#)

Powerful boom is adjustable to five different working angles in both directions

- Working width 2.5 m
- Powerful joint with two sliding surfaces between boom and blade for optimal strength
- Double-articulated blade
- With the hydraulic cylinder you can change the working angle of the dozer blade (also works manually) or rotate it through 360°
- Replaceable wear steel, stabilisers, support wheels, hydraulic cylinders, hydraulic hoses and lifting arm pins as standard

The Kellfri 2.5 meter Dozer Blade is a double-articulated blade for you if you want to upgrade. The more powerful design copes with tougher tasks.

Robust boom that can be adjusted to five different working angles, making it possible to push the snow further out into ditches to make space for new snow. This feature offers the same safe operation when dragging gravel roads without having to drive too close to the edge of ditches to scrape in the gravel.

The dozer blade's hydraulic cylinder changes the working angle of the dozer blade (also works manually) or rotates it through 360° for working in reverse, for instance at crossroads, in courtyards and parking areas where snow must be cleared or piled up.

The support wheels are easy to fit and height-adjust with a turnbuckle for the correct working height and blade angle when clearing snow on unfrozen ground, dragging gravel roads and other adjustment work.

The dozer blade is powerful and very suitable for those requiring a little extra with regard to strength and flexibility. The blade has replaceable wear steel, stabilisers, support wheels, hydraulic cylinder, hydraulic hoses and lifting arm pins as standard.

Powerful joint with two sliding surfaces for optimal strength between boom and blade. Adjustable hydraulically or manually.

The dozer blade requires a double-acting hydraulic outlet on the tractor. The dozer blade is supplied with two hydraulic ½ inch, quick coupling male hoses.

TECHNICAL DATA

Working width	2500 mm
Blade height	630 mm
Wheels	Standard
Hydraulic cylinder	1 st blade
Wear steel	Standard
Boom oscillation	Mechanical
3-pont linkage	Cat. 2
Turning of blades	Mechanical
Weight	430 kg